

**Yorkstone**

MANAGEMENT



**Available for Lease**

**10 King Street East**

9th floor - 4,354 Sq.Ft.

contact: [info@yorkstone.ca](mailto:info@yorkstone.ca) / (416) 203-1334

## THE SPACE:

### Office Space

#### Suite 200 - 4,354 Sq. Ft.

- Full-floor office space
- Spacious reception area with seating space
- Large conference room
- Multiple private offices
- Spacious open-concept work area
- Fully-equipped kitchen
- Large windows throughout the unit, filled with natural light

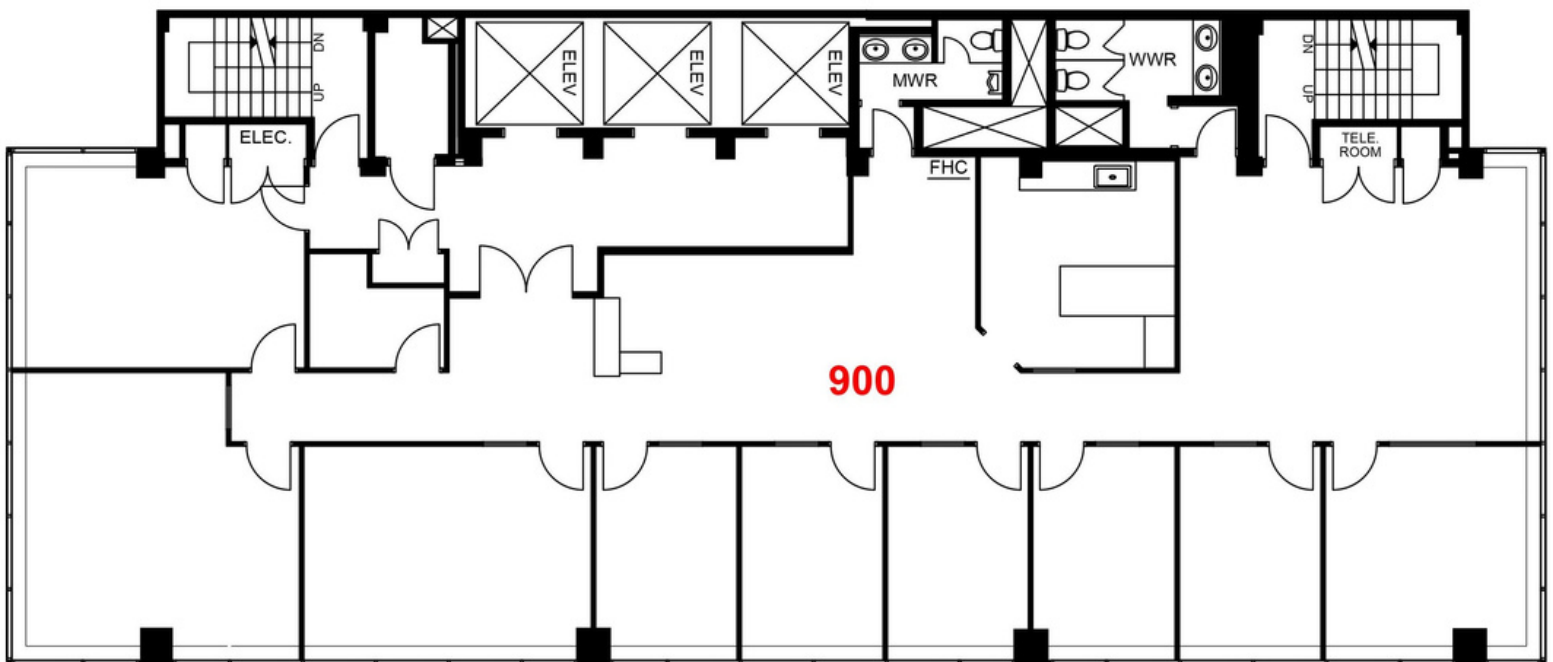
### Building Information

- Building Size: 59,268 sf
- Total Number of Floors: 15
- Year Built: 1960
- Passenger Elevators: 3

### Nearby Amenities:

- King Edward Hotel
- Path System
- Starbucks
- Dineen Coffee
- Numerous Restaurants
- King Subway Station

## FLOOR PLAN:



# SUITE PHOTOS:



**contact: [info@yorkstone.ca](mailto:info@yorkstone.ca) / (416) 203-1334**