

Yorkstone

MANAGEMENT



Available for Lease

10 King Street East

Suite 800 - 1,421 Sq.Ft.

contact: info@yorkstone.ca / (416) 203-1334

THE SPACE:

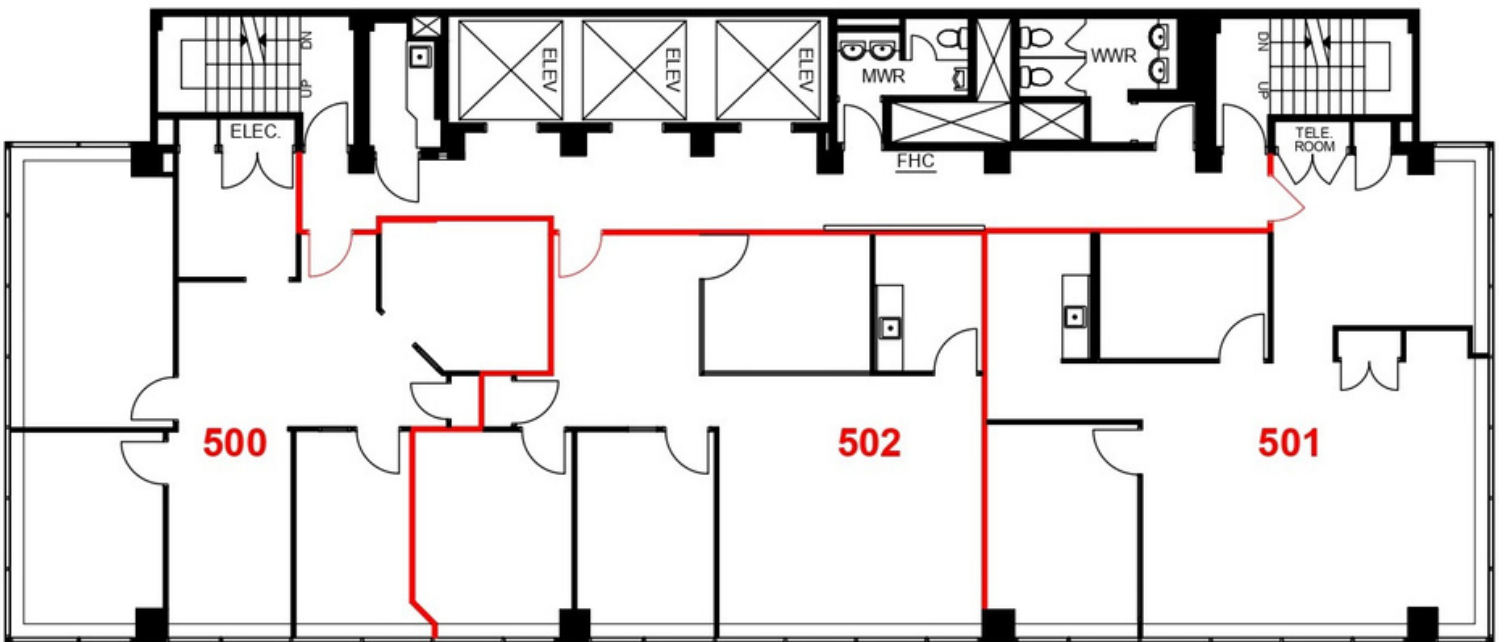
Office Unit - 1,421 SF

- Spacious open-concept workspace
- Meeting room and kitchen
- Floor to ceiling windows
- Furniture available

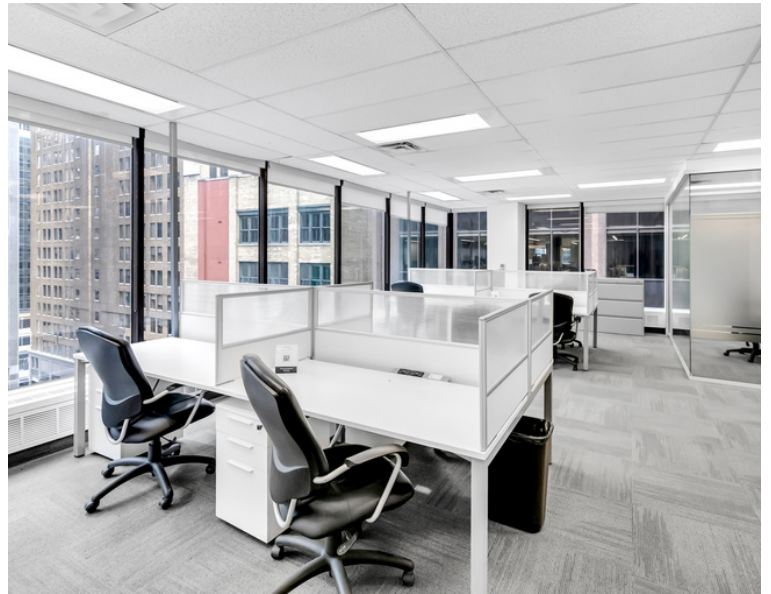
Nearby Amenities:

- King Edward Hotel
- Path System
- Starbucks
- Dineen Coffee
- Numerous Restaurants
- King Subway Station

FLOOR PLAN:



PHOTOS:



contact: info@yorkstone.ca / (416) 203-1334