

Yorkstone

MANAGEMENT



Available for Lease

10 King Street East

Suite 502 - 1,395 Sq.Ft.

contact: info@yorkstone.ca / (416) 203-1334

THE SPACE:

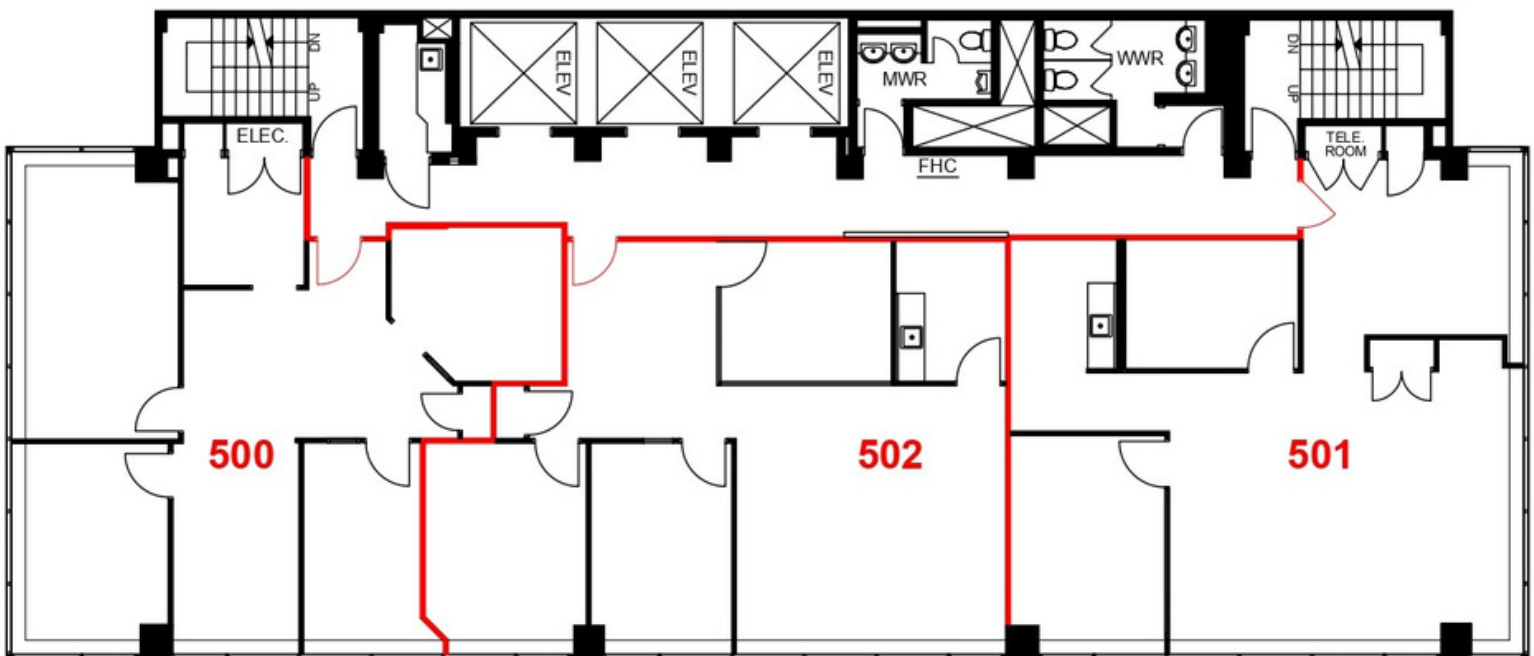
Office Unit - 1,395 SF - 2,841 SF

- Built out with 2 office, meeting room, kitchenette and open workspace
- Floor to ceiling windows
- Furniture available
- Potential of combining with Suite 500

Nearby Amenities:

- King Edward Hotel
- Path System
- Starbucks
- Dineen Coffee
- Numerous Restaurants
- King Subway Station

FLOOR PLAN:



PHOTOS:



contact: info@yorkstone.ca / (416) 203-1334