

Yorkstone

MANAGEMENT



Available for Lease

10 King Street East

Suite 500 - 1,446 Sq.Ft.

contact: info@yorkstone.ca / (416) 203-1334

THE SPACE:

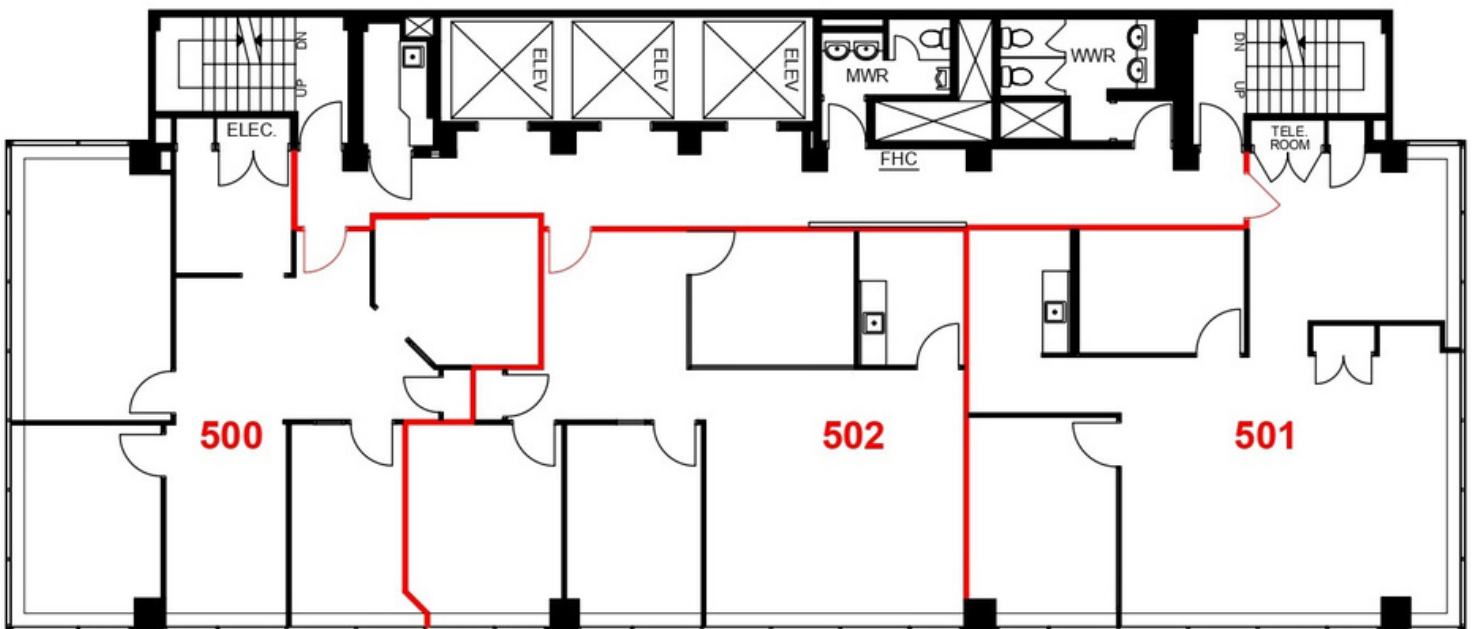
Office Unit - 1,446 SF

- Spacious open-concept workspace
- Large meeting room
- Multiple private offices
- Newly renovated kitchenette
- Floor to ceiling windows
- Furniture available

Nearby Amenities:

- King Edward Hotel
- Path System
- Starbucks
- Dineen Coffee
- Numerous Restaurants
- King Subway Station

FLOOR PLAN:



PHOTOS:



contact: info@yorkstone.ca / (416) 203-1334