

Yorkstone

MANAGEMENT



Available for Lease

10 King Street East

15th floor - 4,354 Sq.Ft.

contact: info@yorkstone.ca / (416) 203-1334

THE SPACE:

Office Space

Suite 1500 - 4,354 Sq. Ft.

- Penthouse suite with direct elevator access
- Spacious reception area
- Conference room
- Multiple private offices
- Multiple open-concept work areas
- Copy room/storage
- Kitchen
- Large windows throughout the unit

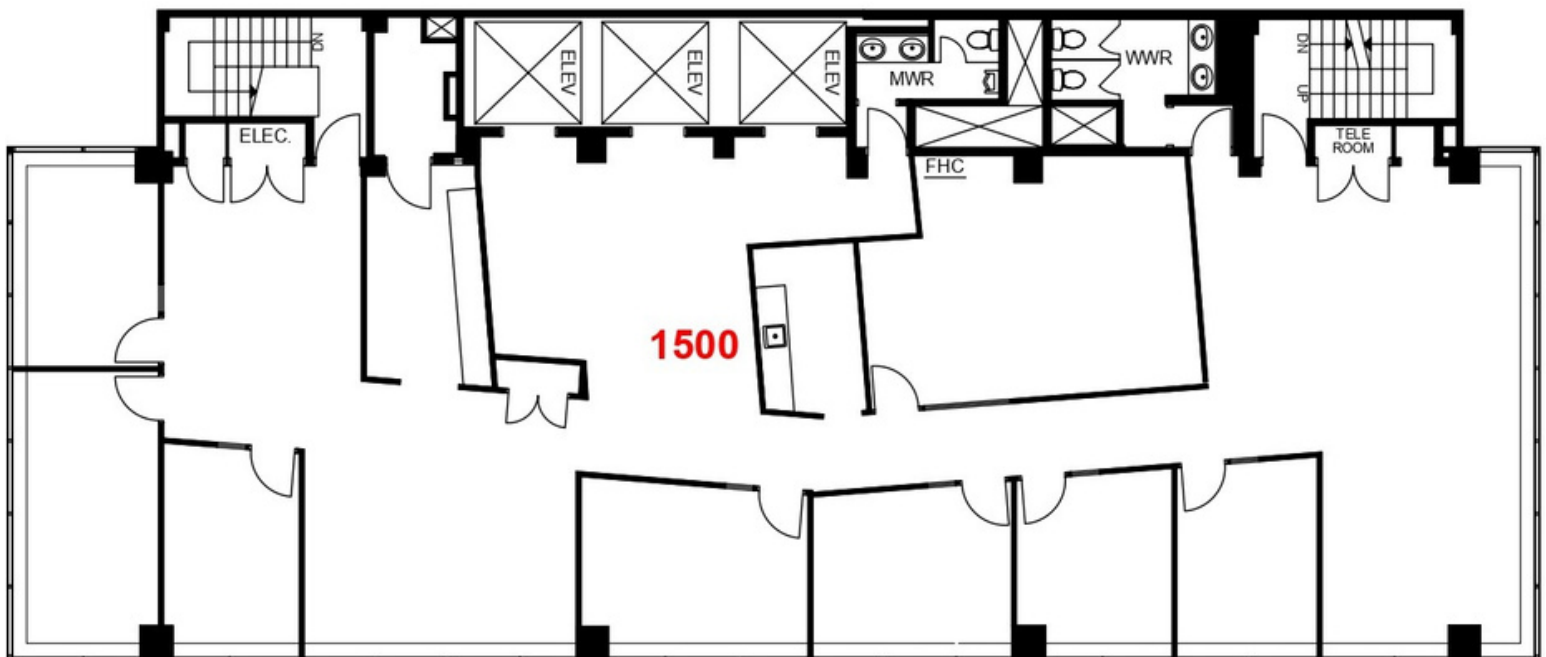
Building Information

- Building Size: 59,268 sf
- Total Number of Floors: 15
- Year Built: 1960
- Passenger Elevators: 3

Nearby Amenities:

- King Edward Hotel
- Path System
- Starbucks
- Dineen Coffee
- Numerous Restaurants
- King Subway Station

FLOOR PLAN:



SUITE PHOTOS:



contact: info@yorkstone.ca / (416) 203-1334